

M7 R56 Rear Chassis Brace Installation Guide

Additional tools needed (not included):

10mm Wrench
13mm Socket



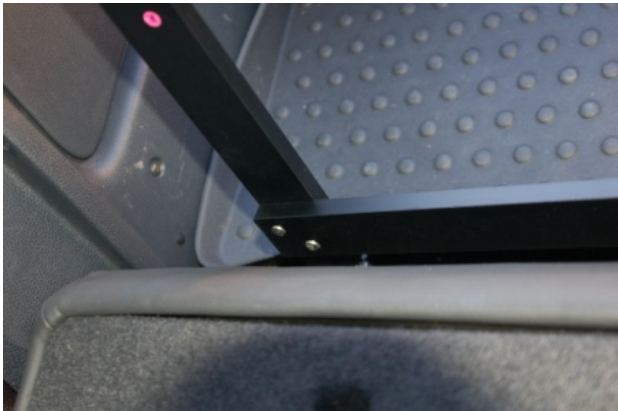
Use the 13mm socket to remove the stock hardware that holds the rear seat lock bracket (R53 shown in left image). Install the top bar of the system so that the M7 logo faces the rear of the car. You will need to trim some of the interior felt material surrounding the mounting brackets. Use hardware set #4 for attachment. Note that the OEM seat lock bracket sits ON TOP of the mounting bracket with 2 stand-offs.



With the smaller Allen wrench, the 10mm wrench, and hardware set #3, attach the vertical bars to the cargo loops. Be sure the washers are on the outside of the vertical bar.



Rotate the vertical bars for attachment to the top bar. This may require the use of one Allen tool to line the holes up due to pre-tensioning of the system. Attach with hardware set #2. Be sure to use a washer under the head of each bolt.



Use hardware set #1 to attach the vertical bars with the lower bar. Be sure to use a washer under the head of each bolt.

This completes the installation of the R56 Rear Chassis Brace.

If you have questions or need additional technical support, please email techsupport@m7tuning.com or call our office at 562-608-8123.



(fire extinguisher not included with this kit)