

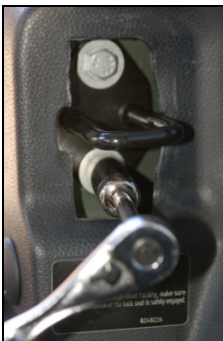
## M7 Rear Chassis Brace Installation Guide

Additional tools needed (not included):

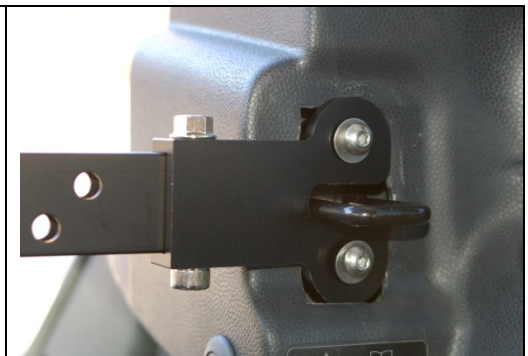
10mm Wrench  
13mm Socket

Identify the included hardware:

Allen Tools



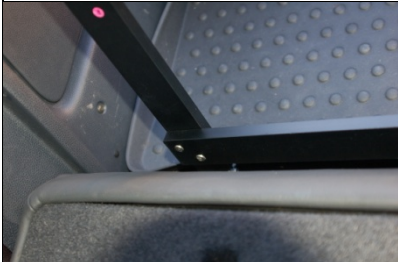
Use the 13mm socket to remove the stock hardware that holds the rear seat lock bracket. Install the top bar of the system so that the M7 logo faces the rear of the car. Use hardware set #4 for attachment.



With the smaller Allen wrench, the 10mm wrench, and hardware set #3, attach the vertical bars to the cargo loops. Be sure the washers are on the outside of the vertical bar.



Rotate the vertical bars for attachment to the top bar. This may require the use of one Allen tool to line the holes up due to pre-tensioning of the system. Attach with hardware set #2. Be sure to use a washer under the head of each bolt.



Use hardware set #1 to attach the vertical bars with the lower bar. Be

sure to use a washer under the head of each bolt.



Please call our office if you require additional assistance.