

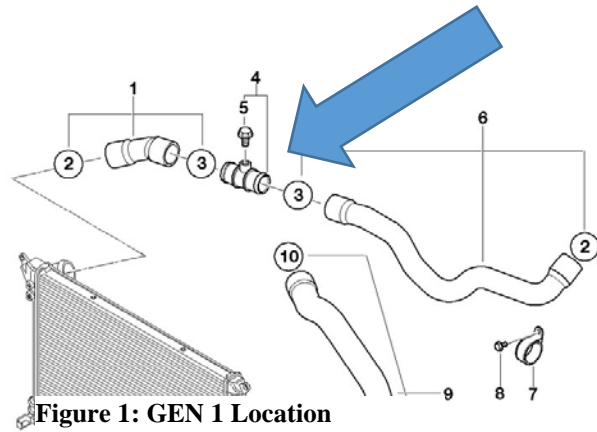
91-1009 WATER COUPLER

INSTALLATION NOTES

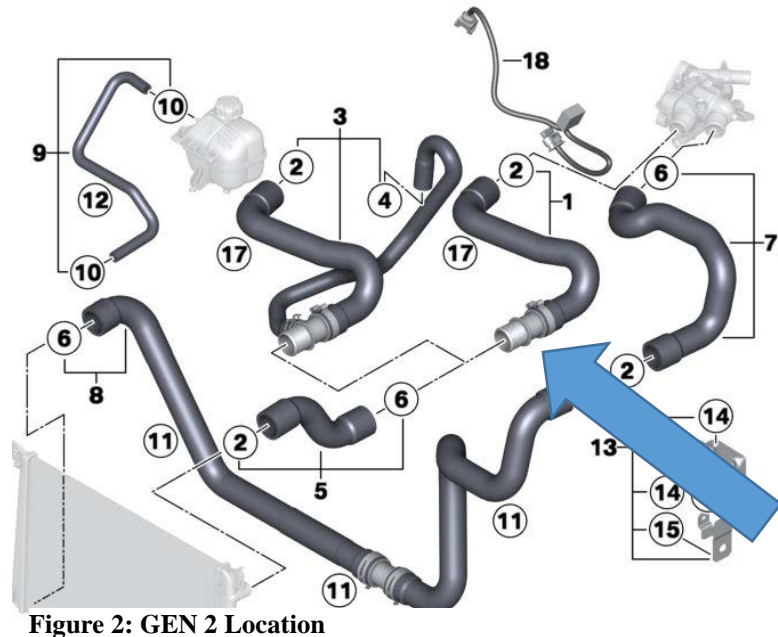
This product is designed to be installed in-line with the cooling system of your MINI AND for use with an aftermarket mechanical or electrical water temperature gauge. It best functions when installed on the OUT coolant hose from the engine. This will give you the water temperature as it exits the engine and before it is cooled through the radiator. It will directly replace the plastic OE hose coupler found in the out hose between the engine and the radiator.

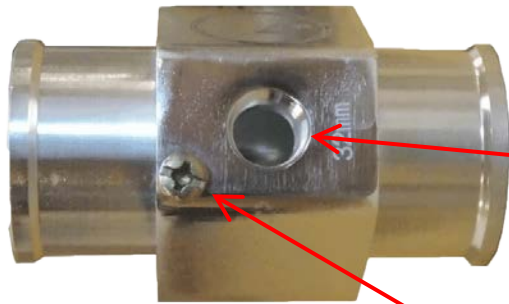
OE Coupler Location

GEN 1- (R50-R53) – Located in the water hose directly between the radiator and the front of the engine, on the top side.



GEN 2 (ALL R55-R61) - Located on the left side unibody frame rail behind and below the coolant reservoir tank.





1/8 NPT THREAD FOR
GAUGE SENDING
UNIT

IF USING AN ELECTRICAL GAUGE,
MAKE A GROUND WIRE AND CONNECT
IT FROM THIS SCREW TO THE
VEHICLES CHASSIS FOR A PROPER
ELECTRICAL GROUND.

If anything seems unclear, please don't hesitate to call our office Monday – Friday, 9am—4pm EST.
Or e-mail us info@speed.com.

Enjoy the Ride and Stay M7 Tuned.....