

R53 M7 Under Strut Sytem Installation Guide



CAUTION:

WHEN WORKING UNDER YOUR CAR ALWAYS USE THE RIGHT EQUIPMENT FOR THE JOB. DON'T BE TEMPTED TO TAKE SHORT CUTS OR USE INAPPROPRIATE ITEMS. NEVER WORK UNDERNEATH A VEHICLE THAT IS ONLY SUPPORTED BY A JACK; USE AXLE STANDS OR CAR RAMPS THAT ARE IN GOOD CONDITION AND PROPERLY RATED FOR YOUR VEHICLE'S WEIGHT.

Tools

5mm Allen wrench
8mm Allen wrench
12mm open end wrench
19mm open end wrench
Red Loc-tite
Air Impact gun (or electric)



Parts List

Front Brace:

- 1. Drill
- 1. Nut insert tool
- 4. Small washers
- 2. large washers
- 2. Nut inserts
- 2. long Bolts
- 2. Short Bolts



Middle Brace:

- 2. Bolts
- 2. Washers
- 2. Hex nuts



Rear Brace:

- 4. Bolts
- 4. Washers



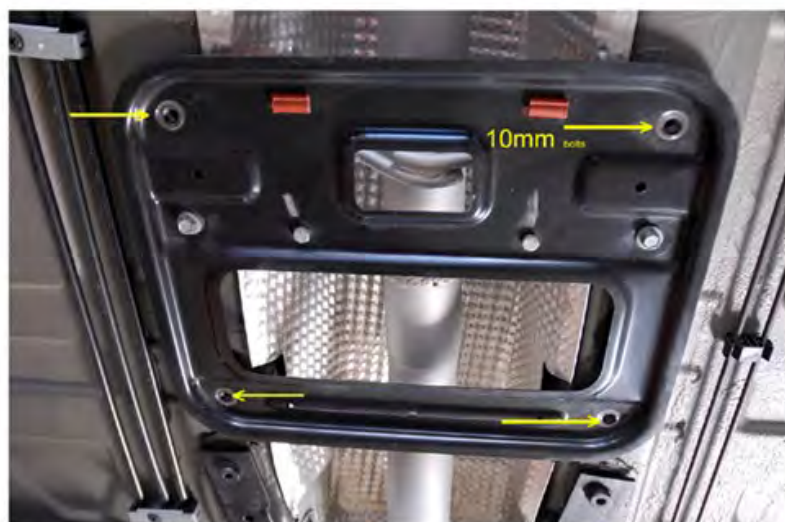
Rear Brace

Remove the four 10mm bolts
as indicated in the picture.

Install the M7 USS rear plate
with the included (4) bolts.

Use red Loc-tite to secure
the bolts.

(Do not use the included washers)



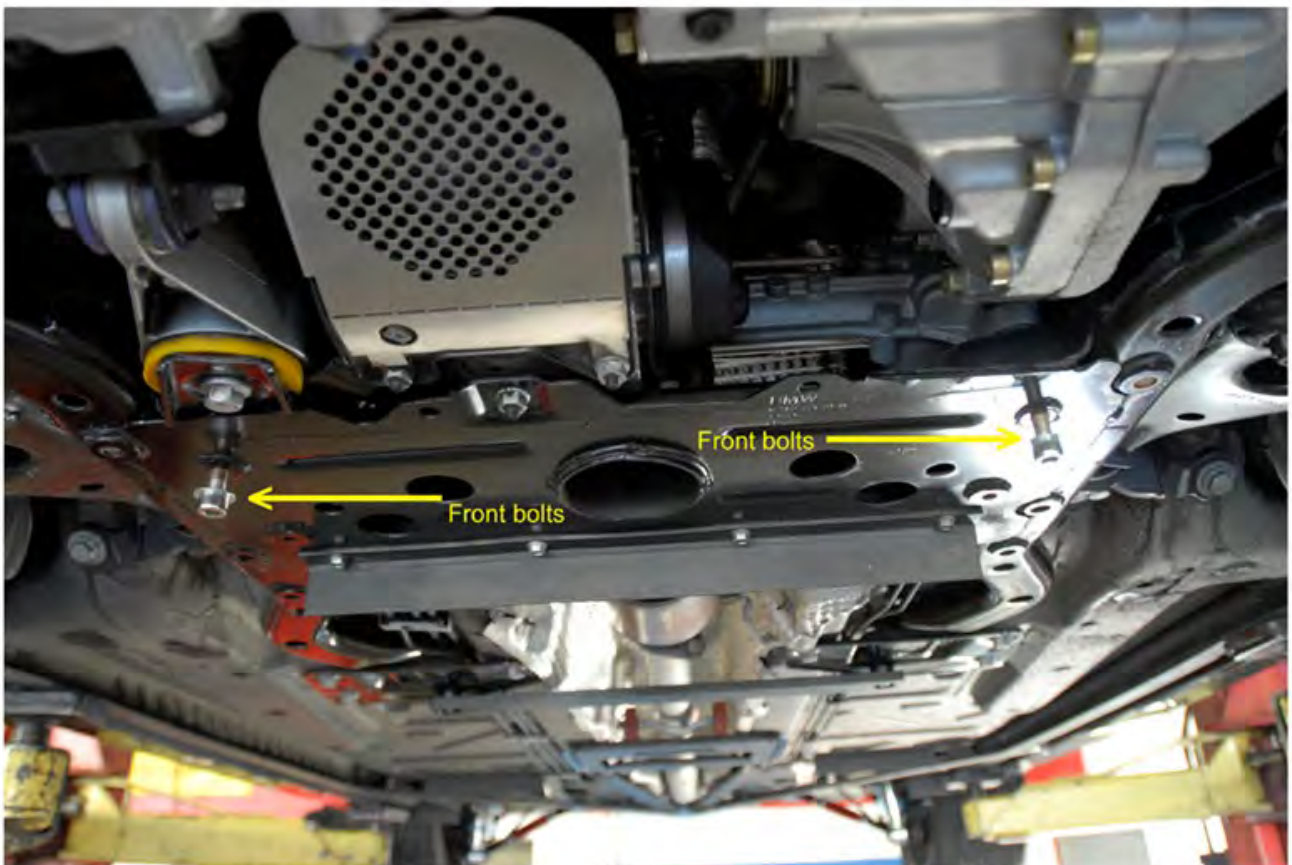
Middle Brace

Place the middle brace cross bar up to the factory 3 bolt brackets. Align it with the 2 open holes in the brackets. Insert the M8 bolts & flat washers from the bottom side and install the flange nuts from the top side. Use one drop of red Loctite. Tighten and torque to 45 lb-ft (60Nm)



Front Brace page 1.

The front brace comes pre assembled (do not tighten the bolts) hold the brace assembly up to the bottom of the car and align it with the holes. Make a mental note how the holes line up.



Front Brace page 2

Locate the hole shown in the image, use the supplied drill open up the existing hole. This will allow the supplied nut insert to fit properly.



Front Brace page 3

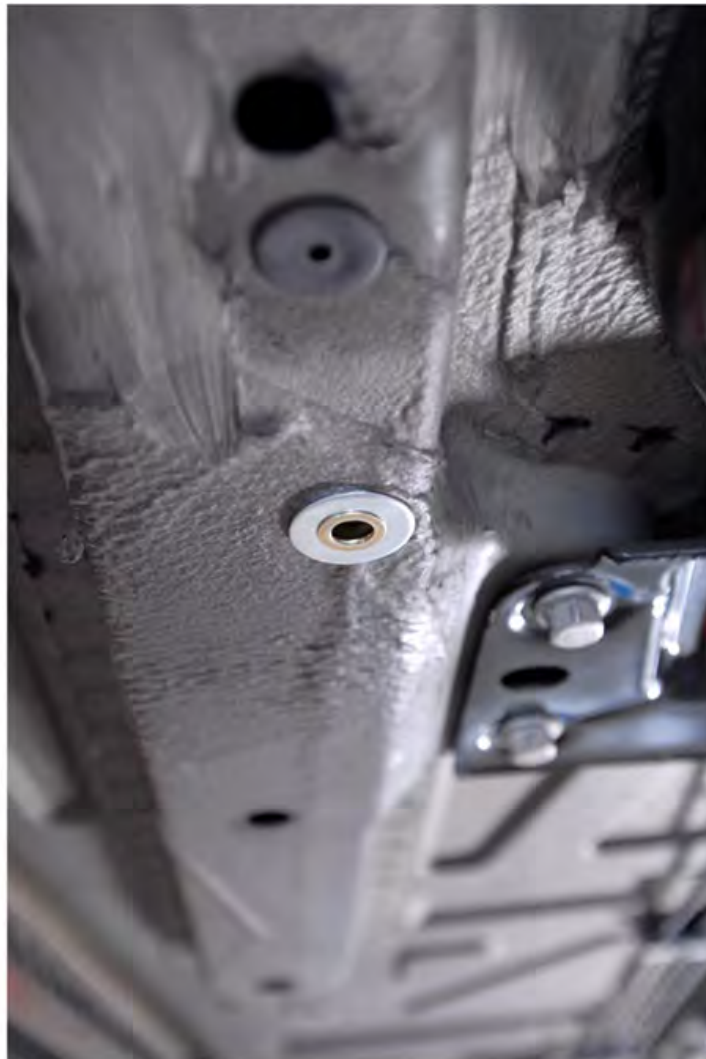
Thread the Nut insert tool on to the insert, slide the large washer over the nut insert. Push the nut in to the hole, and tighten as in picture.

Do not over torque.



Front Brace page 4

Correct install of nut insert.



Front Brace page 5

This view will show a correctly installed M7USS. The last step will be to tighten the eight bolts that holds the brace together.



Thank you and stay M7 Tuned.....

M7 R53 Rear Chassis Brace

53-5M7202

Installation Guide

Additional tools needed (not included):

10mm Wrench
13mm Socket



Note: Do not fully tighten any hardware until the very end of installation.



1. Use the 13mm socket to remove the stock bolts which holds the rear seat latch bracket and remove the bracket(s) from each side. (R53 shown in left image)

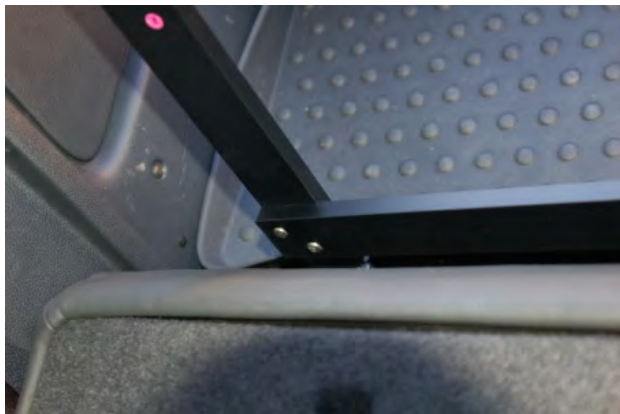
2. Install the top bar of the RCB system so that the M7 logo faces the rear of the car. You may need to trim some of the interior felt material surrounding the mounting brackets.

3. Install the seat latch bracket on top of the RCB and use hardware set #4 for bolting it in place. Make sure that the OEM seat lock bracket sits ON TOP of the RCB crossbar assembly.

4. With the smaller Allen wrench, the 10mm wrench, and hardware set #3, attach the vertical bars to the cargo loops on the floor pan. Be sure the washers are on the outside of the vertical bar.



5. Rotate the vertical bars for attachment to the top cross bar. This may require the use of one Allen tool to line the holes up due to pre-tensioning of the system. Attach with hardware set #2. Be sure to use a washer under the head of each bolt and use caution not to cross thread the tapped holes.



6. Use hardware set #1 to attach the lower cross bar to the two vertical bars. Be sure to use a washer under the head of each bolt.

7. Tighten all hardware. This completes the installation of the R56 Rear Chassis Brace.



(fire extinguisher not included with this kit)

If you have questions or need additional technical support, please email techsupport@m7speed.com