

# M7 R56 Rear Chassis Brace 56-5M7202 Installation Guide

Additional tools needed (not included):

- 10mm wrench
- 13mm Socket



**Note: Do not fully tighten any hardware until the very end of installation.**



1. Use the 13mm socket to remove the stock bolts which holds the rear seat latch bracket to the body and remove the bracket(s) from each side. (R53 shown in left image. Similar on Gen 2 R56)

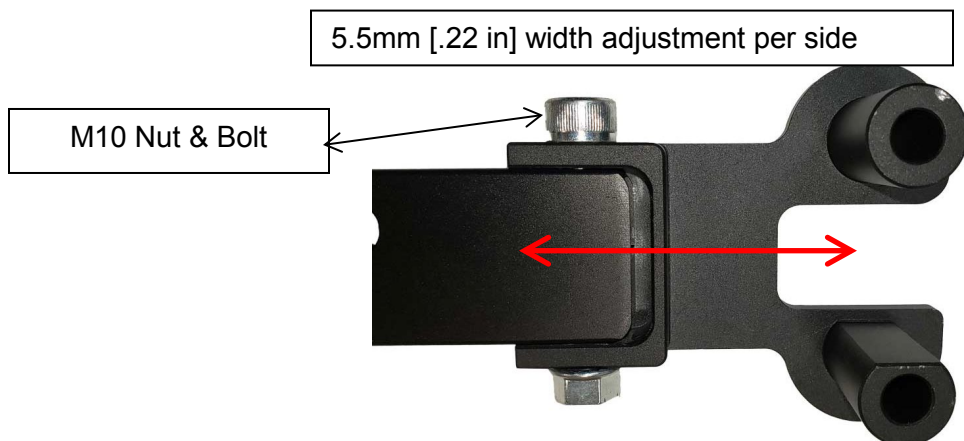
2. Install the top bar of the RCB system so that the M7 logo faces the rear of the car and the two round stand offs on each bracket face towards the body.

3. Install the seat latch bracket on top of the RCB brackets and use hardware set #4 (M8 x 60mm long Socket Head Cap Screws) for bolting it in place. Make sure that the OEM seat lock bracket sits ON TOP of the RCB crossbar



assembly.

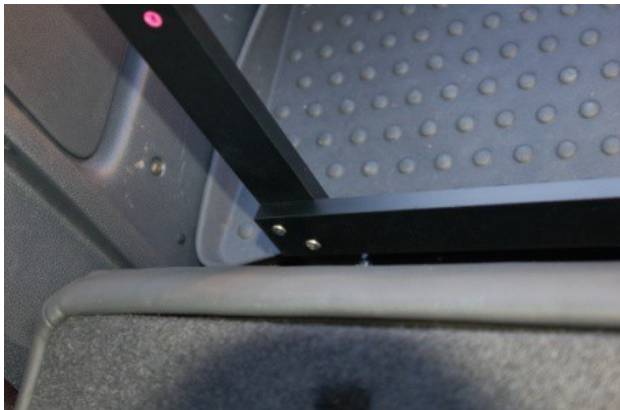
4. Once installed some very minor trimming of the interior felt material surrounding the RCB mounting brackets may be required.
5. **NOTE:** The top cross brace is width adjustable. If the holes for the M8 x 60mm lg SHCS do not line up with the threaded holes in the body, loosen the M10 bolts and nuts which hold the brackets onto the cross bar at each end. Slide the bracket until you achieve proper alignment with the body



6. With hardware set #3, attach the vertical bars to the cargo loops on the floor pan. Be sure the washers are on the outside of the vertical bar.



7. Rotate the vertical bars for attachment to the top cross bar. This may require the use of one Allen tool to line the holes up due to pre-tensioning of the system. Attach with hardware set #2 ([4 each] M10 x 35mm long SHCS, washers and nuts). Be sure to use a washer under the head of each bolt and use caution not to cross tread the tapped holes.



8. Use hardware set #1 ([4 each] M10 x 20mm long SHCS & lock washers) to attach the lower cross bar to the two vertical bars. Be sure to use a washer under the head of each bolt.

9. Tighten all hardware. This completes the installation of the R56 Rear Chassis Brace.

(fire extinguisher not included with this kit)



If you have questions or need additional technical support, please email [techsupport@m7speed.com](mailto:techsupport@m7speed.com)